

# S 70 MDT



# BRONTO SKYLIFT



## TECHNICAL SPECIFICATION

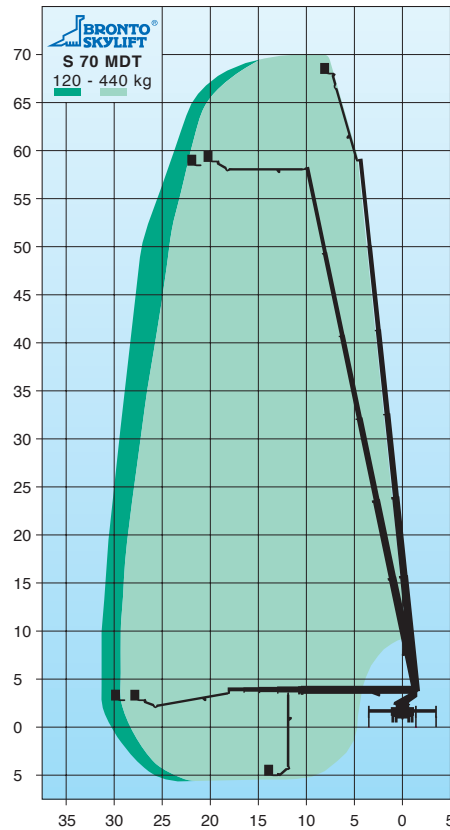
<b>Working height appr.</b>	<b>70.0 m</b>
<b>Height to working cage floor</b>	<b>68.0 m</b>
<b>Max. working outreach</b>	<b>31.0 m</b>
<b>Safe working load</b>	<b>440 kg</b>
<b>Transportation height *</b>	<b>3.85 m</b>
<b>Transportation length *</b>	<b>13.8 m</b>
<b>Transportation width</b>	<b>2.5 m</b>
<b>Working cage</b>	<b>0.9 x 2.2 x 1.1 m</b>
<b>GWV with chassis *</b>	<b>35000 kg</b>

\* depending on chassis

## STANDARD FEATURES

- Bronto<sup>+</sup>; variable jacking/outreach/cage load system
- Bronto Autojacking
- Identical control stations in the working cage and at the turntable with joystick control levers
- Turntable control station with platform and seat
- Multiple working cage system
- Ramp system and movement speed slow-down for all boom movements
- Back-up system for hydraulics by battery pump and bleed down
- Double safety system
- Automatical interlock system
- Outrigger control panel at the rear of vehicle
- Aluminium decking with steps
- CE and EMC Certification
- Mountable onto various standard chassis

Alterations reserved.



## S 70 MDT

ISO 9001  
ISO 14001



CERTIFICATED  
FIRM



S001 (EN 45012)  
S007 (EN 45012)